



The Most Informed
Manufacturing Businesses
Use SuiteFactory

Download SuiteFactory Now!

Phone: 1-781-933-9500
Fax: 1-781-933-9238

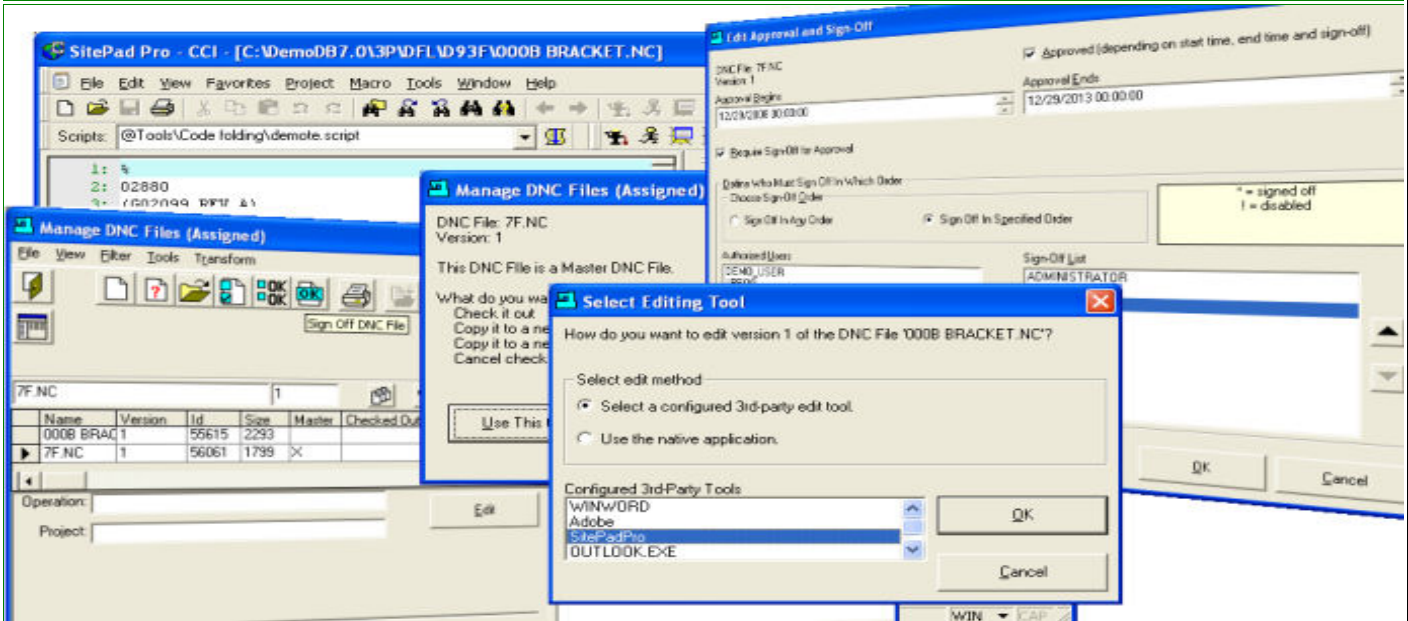
29 years Providing Working Solutions for Manufacturing!

SuiteApproval™ Module
An ISO9000 Document Control Management Module
For Creating Multiple Levels of Approval for Controlling Release of all your Documents
Part of an Integrated Family of SuiteFactory™ EventAware™ Modules
For Windows 7™, Windows™ XP including Terminal Server 2003/2005/2008 Support

SuiteApproval™ Module supports Creating and Establishing Multi-Level ISO9000 Approval Criteria for Controlling Approval and Release of all of your Files, Documents & Packets into Production.

This includes: Establishing Birth and Death Dates; Multi-Level Sign-Off and Approval States, Controlled Check-Out/Check-In of All Files/Documents/Packets using SuiteFactory™ or a Third-Part Application; Automatic Archiving and Complete Histories of Active, Deleted and or old Files/Documents/Packets

SuiteApproval™ an Integrated Digital SuiteFactory™ Module



Standard:

SuiteApproval™ Basics	<p>SuiteApproval™ Basics Include:</p> <ul style="list-style-type: none"> • EventAware™ (Next Stage Approval Real-Time User Notification) • Create any number Sign-Off States • Assign any number of User Groups to each Sign-Off State • Create any number of Flow Charts • Assign any number of Sign-Off States to a Flow Chart • Configure each Sign-Off State in a Flow Chart by selecting & ordering Approvers • Assign a Flow Chart to a N/C File, Document or Packet with Final Settings • Create On-The-Fly Flow Chart/Sign-Off States for one-offs • Select & Assign Flow Charts from List or existing instanced Flow Charts • Real-Time Approval & Sign-Off Reminders
Sign-Off States	<p>SuiteApproval™ Create Sign-Off States:</p> <ul style="list-style-type: none"> • Sign-Off States <ul style="list-style-type: none"> ○ You can create as many Individual Sign-Off States as Required ○ You assign to each Sign-Off State one or more User Group(s) <p>Note: Sign-Off States can have one or more of it's Users or User Groups play the Role(s) of "Document" Approvers.</p> <p>Examples of Sign-Off States: Development (3 Sign-Off Users), Tryout(3 Sign-Off User Groups), Pre-Production(2 Sign-Off Users and 2 Sign-Off User Groups), etc.</p>
Sign-Off Flow Charts	<p>SuiteApproval™ Create Sign-Off Flow Charts:</p> <ul style="list-style-type: none"> • Sign-Off Flow Charts <ul style="list-style-type: none"> ○ You can create as many Individual Flow Charts as Required ○ You can assign as many Individual Sign-Off States as Required for each Flow Chart ○ You can configure each Sign-Off State by selecting Approver(s) ○ You can have the Approvers in a set order or random <p>Note: At this stage you have created the Flow Charts which are the Entities that get assigned to N/C Files, Documents or Packets. Before a N/C File, Document or Packet is Approved for Production each Sign-Off State needs individual Approval.</p>
Assigning Flow Charts	<p>SuiteApproval™ Assigning Flow Charts:</p> <ul style="list-style-type: none"> • Select a N/C File, Document or Packet • Select a Flow Chart from: Controlled Documents, N/C Files, Packets or Flow Charts • Select a Specific Flow Chart from one of the Lists • Optionally create & assign On-The-Fly Flow Charts for one-offs <p>Note: At this stage you have Assigned a Flow Chart to a N/C File, Document or Packet.</p> <p>Before this N/C File, Document or Packet can be Approved each Sign-Off State needs to be individually</p>

	Approved.
Automatic Reminder	<p>SuiteApproval™ Reminds User(s) of Files Waiting for Approval:</p> <ul style="list-style-type: none"> • Users notified when N/C Files need Approval • Users notified when Documents need Approval • Users notified when Packets need Approval <p>Note: SuiteApproval™ allows a particular User or any User in a User Group to Sign-Off & Approve Files waiting for approval for that User Group/Sign-Off State. It only reminds them when it's their turn to Sign-Off these Files, Documents and or Packets.</p>
How it Works	<p>SuiteApproval™ How it Works</p> <p>In essence using the SuiteApproval methodology requires that a "File" traverses a list of Sign-Off States which individually need to be approved before that "File" is fully Approved for "Production".</p> <p>As the UnApproved "File" traverses the Sign-Off States a User can only access the "File" associated with a particular Sign-Off State if it is in a Pending Approval State. Once it has been approved for that Sign-Off State a User can no longer access that "File" in that Sign-Off State.</p> <p>By placing Users in the Appropriate User Group/Sign-Off State Combinations you have full control over who can access Unapproved "Files".</p>
Options & Upgrades:	
SuiteApproval™ As An Option To:	<p>SuiteApproval's™ Parent Applications</p> <ul style="list-style-type: none"> • SuiteFactory™ • SuiteShop™ • SuiteDNC™ • SuiteDocs™
<p>For more information call, Fax, email or visit our SuiteFactory Web site: CAD/CAM Integration, Inc. 76 Winn Street Woburn, MA 01801 Tel: 781-933-9500 Fax: 781-933-9238 Email:sales@suitefactory.com SuiteFactory Web:www.suitefactory.com</p>	