



The Most Informed  
Manufacturing Businesses  
Use SuiteFactory

Download SuiteFactory Now!

Phone: 1-781-933-9500  
Fax: 1-781-933-9238

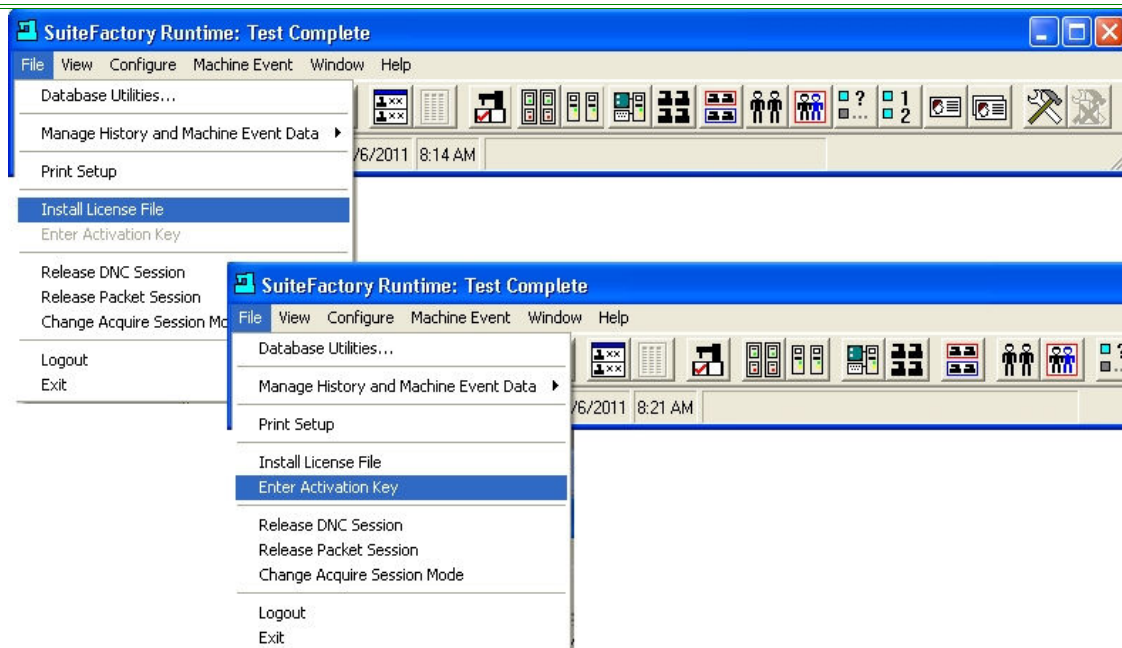
29 years Providing Working Solutions for Manufacturing!

**SuiteLicense™**  
**A Configurable Options Based Licensing Module**  
**Configurable License for Internet Upgrade of All System Options**  
**Part of an Integrated Family of SuiteFactory™ EventAware™ Modules**  
**For Windows™ 7/Windows™ XP including Terminal Server Support**

SuiteLicense™ utilizes SuiteFactory's Object Oriented Based Development where Modules and Features were developed and incorporated into SuiteFactory as Independent Objects minimizing any Object Entanglement.

Since the Objects are not Entangled it is possible to activate any and all of the Options & Features selectively for SuiteFactory over the Internet as a Customer's needs change without CCI having to visit. In minutes you can add any Option or Feature and we will EMail you a new License & Key! Need Training? We offer over the Internet Training coupled with lots of Training Documents you can download.

**SuiteLicense™ Providing Instant Activation over the Internet**



**SuiteFactory's SuiteLicense Module**

**SuiteLicense's™**  
**Basics**

**SuiteLicense's™ Basics Include:**

- SuiteDNC Option
- SuiteDNC Machine Tool License
- SuiteDNC Sessions(Clients)
- SuitePacs Option
- SuiteDocs Option
- SuiteDocs/SuitePacs Sessions(Clients)
- Number of Users
- Number of User Groups
- Number of Root File Cabinets
- Number of Resource Collections
- History Logging & Reports
- Approval & Sign-Off
- Search Criteria
- Third Party Tools
- SuiteCharts
- Machine Event RRC
- Machine Event Status
- SQL Support
- Number of Workstations(Needed for Clients)

**SuiteDNC Options**

**Machine Tool Licenses**

**SuiteDNC™ Communication Licenses**

- RS232 Connections
- UNC Connections
- FTP Connections
- MDI(SuiteMDI) Connections

**Note:** SuiteFactory supports many different Machine Tool Types as indicated above. Each individual Machine Tool to which you need to Communicate requires a License.

For "Manual" Machine Tools SuiteFactory's provides SuiteMDI that allows Manual Events & Data to be entered & collected. This does require a PC to be located at or near the "Manual" Machine Tool.

**Client Sessions**

**SuiteDNC™ Client Session License**

- Active Client Session

**Note:** Client Sessions are SuiteFactory Active Workstations that can be used to access SuiteFactory from anywhere on the Network. You need at least one Session License to access SuiteFactory. Note that included as part of the Base Package are four SuiteDNC Sessions.

	<p>If you require Programmers, Mfg. Engineers, Quality Control Engineer, Shop Floor Supervisors, etc. to access SuiteFactory you will need a Client Session License.</p>
<p><b>Resource Collection Licenses</b></p>	<p><b>Resource Collection License</b></p> <ul style="list-style-type: none"> <li>Resource Collections</li> </ul> <p><b>Note:</b> Resource Collections are a special type of container specifically for N/C Files and Packets(Operations). They also provide the associations to the specific Machine Tools that can use the contained N/C Files.</p> <p>Each Machine Tool License includes two Resource Collections where the usual use is to have one of the Resource Collections hold the N/C Files for Downloading to the Machine Tool and the other for N/C Files uploaded from the Machine Tool which make them usefull for segregating N/C Files Modified at the CNC.</p> <p>Beside using "Resource Collections" for Machine Tool Associations they can also be used to segregate N/C Files according Customers, Jobs, etc.</p> <p>Resource Collections also have special capabilities for Automatically Importing and Naming N/C Files and providing special processing of downloaded files such as placing a hold on them or deleting them. These can provide additional security &amp; provide Time Savers for Administrators.</p> <p>N/C Files, Machine Tools and Packets can easily be moved to and from Resource Collections and can be Associated &amp; Unassociated with User Groups for efficient Management manually or using Drag(Internal/External) &amp; Drop Operations.</p>
SuitePacs Options	
<p><b>SuitePacs Licenses</b></p>	<p><b>SuitePacs™ License</b></p> <ul style="list-style-type: none"> <li>SuitePacs</li> </ul> <p><b>Note:</b> SuitePacs is a special type of container which can hold N/C Files, Controlled Documents(Requires SuiteDocs), Uncontrolled Documents and Sub Packets.</p> <p>A Packet can be used as an Operation, as in a Traveler, or for associating Documents, Files &amp; Packets that Engineers, Programmers, Supervisors, etc. may use to manage their Files, Documents, Sub-Packets &amp; Projects.</p> <p>If you are using Packets as Operations you can associate these with Resource Collections which will then allow Shop Floor Users to be able to directly download N/C Files to Machine Tools and View any Documents, Drawings, Process Sheets, N/C Files, Quality Documents, etc. contained in this Packet.</p> <p>To extend its usefullness you can optionally license SuiteThirdPartyTools which would allow you to access external applications which, for example, could allow you to backplot N/C Files, Apt Files, etc.</p>
SuiteDocs Options	
<p><b>SuiteDocs License</b></p>	<p><b>SuiteDocs™ License include:</b></p> <ul style="list-style-type: none"> <li>SuitePacs</li> <li>Users(Includes one for every Client. Add more as needed.)</li> <li>User Groups(Includes five. Add more as needed.)</li> <li>SuiteSearch - A Sophisticated Configurable Search System with Search Engine</li> <li>File Cabinets(Includes five Root File Cabinets. Add more as needed.)</li> <li>History Logging &amp; Reports(Optional)</li> <li>Approval &amp; Sign-Off(Optional)</li> <li>Third Party Tools(Optional)</li> <li>SQL Support(Optional)</li> </ul> <p><b>Note:</b> SuiteDocs is a full fledged stand alone Document Control Application and can be used without SuiteDNC. It includes all of the SuiteFactory Modules needed to qualify as a Document Control System with Options that enhance it so it can be fully ISO9000 compliant.</p> <p>If you need to access Third-Party Applications you can Optionally add SuiteThirdPartyTools and connect to almost any Microsoft Command-Line Compliant External Application.</p>
<p><b>Client Sessions</b></p>	<p><b>SuiteDocs™ Client Session License</b></p> <ul style="list-style-type: none"> <li>Active Client Session</li> </ul> <p><b>Note:</b> Client Sessions are SuiteFactory Active Workstations that can be used to access SuiteFactory from anywhere on the Network. You need at least one Session License to access SuiteFactory. Note that included as part of the Base Package are four SuiteDocs Client Sessions.</p> <p>If you require Programmers, Mfg. Engineers, Quality Control Engineer, Shop Floor Supervisors, etc. to access SuiteFactory you will need a Client Session License.</p>
Users & User Groups Options	
<p><b>SuiteFactory User Group Licenses</b></p>	<p><b>SuiteFactory User Group License</b></p> <ul style="list-style-type: none"> <li>SuiteFactory User Groups</li> </ul> <p><b>Note:</b> A SuiteFactory User Group is where Security and Access to SuiteFactory begins. Without User Groups you can not access SuiteFactory.</p> <p>SuiteFactory includes five User Groups as part of the Base System.</p> <p>Since User Groups are intimately associated with SuiteFactory Rights, Resource Collections and Sign-Off States you will need as many User Groups as you have unique Roles in your Company.</p> <p>In SuiteFactory a User can "Play" a Role such as a Programmer, Operator, Supervisor, Engineer, etc. Whatever unique settings that a particular Role needs requires a User Group License. A User can belong in any number of User Groups so a User that has multiple Roles needs only to belong to those User Groups.</p> <p><b>Note:</b> Any number of Users can belong to a User Group.</p>

<p style="text-align: center;"><b>SuiteFactory User Licenses</b></p>	<p><b>SuiteFactory User License</b></p> <ul style="list-style-type: none"> <li>• SuiteFactory Users</li> </ul> <p><b>Note:</b> SuiteFactory Users are entities that have unique Names &amp; Passwords that can be associated with any number of User Groups thereby inheriting the User Group Rights, Data Access, SuiteFactory Access, etc.</p> <p><b>Note:</b> You will need a User License for each User in SuiteFactory.</p>
<p>Miscellaneous Options</p>	
<p style="text-align: center;"><b>File Cabinet Licenses</b></p>	<p><b>SuiteFileCabinets™ a Virtual File Cabinet License</b></p> <ul style="list-style-type: none"> <li>• SuiteFileCabinets</li> </ul> <p><b>Note:</b> SuiteFileCabinets are Virtual File Cabinets which are based on the File Cabinet Paradigm. It includes built-in security allowing Users to securely store and manage all of their Files, Documents and Packets.</p> <p>A User can use different "File Cabinets" for managing all of their Projects and by using SuiteFactory's Drag &amp; Drop Features you can freely move Items into and out of these "File Cabinets" or even move "File Cabinets" to other "File Cabinets".</p> <p>Each license adds another Root File Cabinet Node from which you grow this File Cabinet to any depth of "Draws" needed.</p>
<p style="text-align: center;"><b>Approval &amp; Sign-Off Licenses</b></p>	<p><b>SuiteApproval™ Sign-Off States &amp; Flow Charts License</b></p> <ul style="list-style-type: none"> <li>• SuiteApproval</li> </ul> <p><b>Note:</b> SuiteApproval allows you to create any number of Sign-Off States where each State has a list of Sign-Offs by Users or User Groups. SuiteApproval also provides the ability to create Sign-Off Flow Charts which can contain any number of Sign-Off States.</p> <p>You can then select an Instanced Flow Chart from your Flow Chart List and associate it with a File, Document and or Packet thereby completely controlling the Approval &amp; Sign-Off Flow of all of your "Unapproved:" Files, Documents and Packets in Manufacturing, Engineering, Quality &amp; the Office.</p>
<p style="text-align: center;"><b>History Logging And Reports</b></p>	<p><b>SuiteReports™ License</b></p> <ul style="list-style-type: none"> <li>• SuiteReports</li> <li>• SuiteFilter (Used with SuiteReports for Advanced Filtering)</li> <li>• SuiteTracker (Selection of Events that Require the User to input Change Reasons)</li> </ul> <p><b>Note:</b> SuiteReports &amp; SuiteFilters coupled with SuiteTracker provides SuiteFactory with the ability to capture Events that involved any changes to Documents, Files &amp; Packets with the Ability to generate Real-Time Reports of Document, File &amp; Packet Change History's including the Who, What, Where, When &amp; Why.</p>
<p style="text-align: center;"><b>Search Criteria Licenses</b></p>	<p><b>SuiteSearch™ with Sophisticated Search Engine License</b></p> <ul style="list-style-type: none"> <li>• SuiteSearch</li> </ul> <p><b>Note:</b> SuiteSearch provides the ability to create any number Search Fields that can be populated with data that can be used later to search for associated N/C Files, Documents and or Packets.</p> <p>You can create any number of separate Fields(9 different types) for N/C Files, Documents &amp; Packets which allows a much broader range of Search Criteria to be used for locating these entities.</p> <p>SuiteSearch also includes a multi-level Sophisticated Search Engine for quickly narrowing down the search criteria.</p>
<p style="text-align: center;"><b>Third Party Tools License</b></p>	<p><b>SuiteThirdPartyTools™ License</b></p> <ul style="list-style-type: none"> <li>• SuiteThirdPartyTools</li> </ul> <p><b>Note:</b> SuiteThirdPartyTools provides SuiteFactory with a Channel to attach to external Applications so it can extend its capabilities. Third-Party Applications can store their data in SuiteFactory's Database thus providing secure management and control. SuiteThirdPartyTools can also release this data to the associated External Application as needed for processing/modifying.</p> <p>As an example you could use an Application to Re-Post one N/C File to another type of N/C Files and store the original &amp; modified Files in SuiteFactory's Database.</p> <p>As another Example if you have software that can backplot you could use SuiteThirdPartyTools to expose the associated Files to his Application while completely controlling &amp; managing these Files.</p>
<p style="text-align: center;"><b>SuiteCharts License</b></p>	<p><b>SuiteCharts™ Intelligent Interactive Charting License</b></p> <ul style="list-style-type: none"> <li>• SuiteCharts</li> </ul> <p><b>Note:</b> SuiteCharts is a Real-Time interactive Charting Module that displays Real-Time Cycle Times, Up &amp; Downloads, 7 Day Charts, etc. It is independent of Excel which means it is Fast!</p> <p>You can select multiple Machine Tools for which to display individual Cascading Charts and is supported at any active Client</p> <p>Some of the Charts allow you to directly query the Chart for details on Cycle Times and when they took place!</p>
<p style="text-align: center;"><b>SQL License</b></p>	<p><b>Microsoft SQL License</b></p> <ul style="list-style-type: none"> <li>• SQL Option</li> </ul> <p><b>Note:</b> SuiteFactory supports not only Microsoft's Access but also Microsoft's SQL Server database including its Express version.</p>
<p style="text-align: center;"><b>Machine Event Status License</b></p>	<p><b>SuiteMonitoring™ Machine Event Status License</b></p> <ul style="list-style-type: none"> <li>• SuiteMonitoring</li> </ul> <p><b>Note:</b> SuiteMonitoring module allows Users of SuiteFactory to create Machine Events which can be inserted in N/C Files or into Marcos at a CNC to be output to SuiteFactory where they are captured, parsed &amp; Recorded in SuiteFactory's Database for later Reporting.</p> <p>These Events can be Cycle Start, Stop, Probe Data, Offsets, etc. or virtually any type of Event that you may want to create. The process of creating an "Event" creates a Structure for storing the data that is to be</p>

	<p>input into the N/C File or into a Macro and output to SuiteFactory during the program's execution. There is no limit on the number and kind of Events you can create.</p>
<p><b>Machine Event RRC</b></p>	<p><b>Machine Event RRC License</b></p> <ul style="list-style-type: none"><li>• SuiteMDI</li></ul> <p><b>Note:</b> SuiteMDI requires SuiteMonitoring as it uses the same processing mechanisms as SuiteMonitoring. It does add an Event Channel for SuiteMDI to send it's Events &amp; Data to SuiteFactory for processing.</p> <p>These Events can be Cycle Start, Stop, Probe Data, Offsets, etc. or virually any type of Event that you may want to capture, store and Report. The process of creating an "Event" creates a Structure for storing the data that is stored in SuiteFactory after being sent from SuiteMDI. There is no limit on the number and kind of Events you can create.</p> <p><b>Note:</b> You can use SuiteMDI with any active SuiteDNC Client Session.</p>
<p>For more information call, Fax, email or visit our SuiteFactory Web site: CAD/CAM Integration, Inc. 76 Winn Street Woburn, MA 01801 Tel: 781-933-9500 Fax: 781-933-9238 <a href="mailto:Emailsales@suitefactory.com">Email:sales@suitefactory.com</a> <a href="http://www.suitefactory.com">SuiteFactory Web:www.suitefactory.com</a></p>	