



The Most Informed  
Manufacturing Businesses  
Use SuiteFactory

Download SuiteFactory Now!

Phone: 1-781-933-9500  
Fax: 1-781-933-9238

29 years Providing Working Solutions for Manufacturing!

**SuiteReports™**  
A Sophisticated Configurable Report's Management Module  
Customer Created History Reports for Documents, Events & More using SuiteFilters  
Part of an Integrated Family of SuiteFactory™ EventAware™ Modules  
For Windows™ 7/Windows™ XP including Terminal Server Support

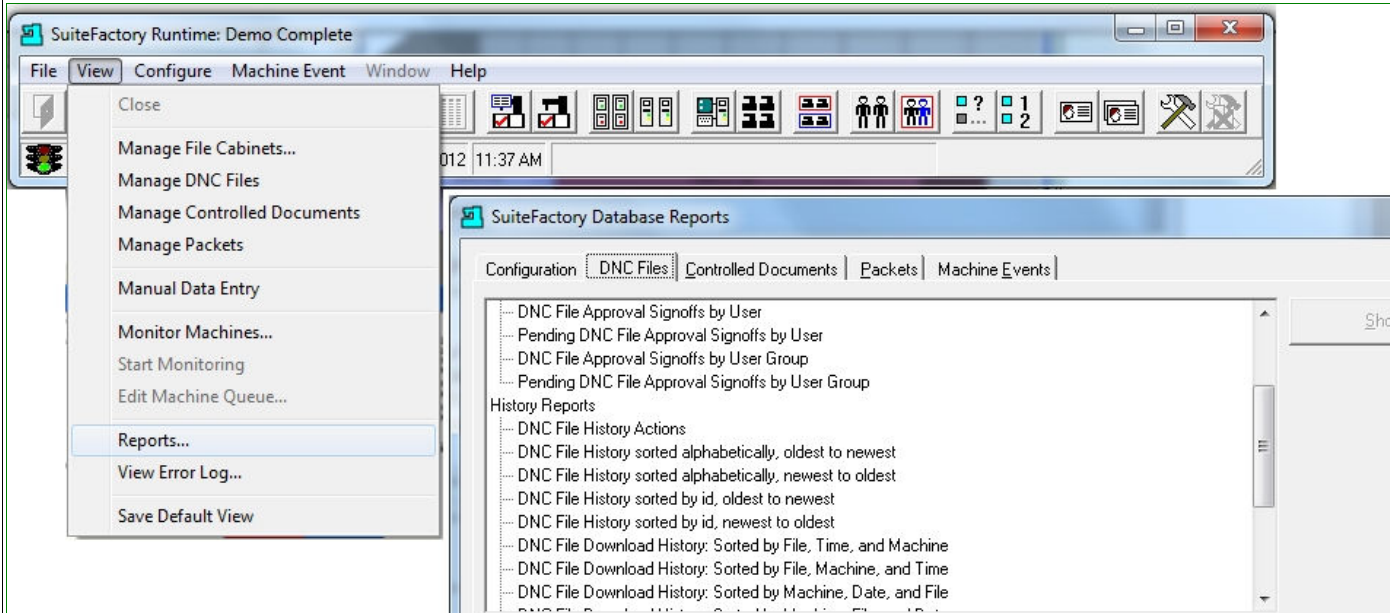
SuiteReports™ consists of a Group of Tools which Empower you to Mine your Company's Data to Analyze how efficiently your Company's uses its Critical Resources and just as importantly if it is meeting its ISO9000 obligations to its customers!

Use SuiteReports™ to Generate Reports that Analyze Data From:

- Configuration
- DNC Files
- Controlled Documents
- Packets
- Machine Events

Want Interactive Visuals? Use SuiteCharts™ where Real-Time Analyses is only a Click Away!

**SuiteReports™ with SuiteFilter™ Generator**



**Standard:**

<b>SuiteReports™ Basics</b>	<p><b>SuiteReports™ Basics Include:</b></p> <ul style="list-style-type: none"> <li>• EventAware™ Technologies (Real-Time updates to SuiteCharts)</li> <li>• Reports for System Configuration</li> <li>• Reports for N/C Files</li> <li>• Reports for Controlled Documents</li> <li>• Reports for Packets</li> <li>• SuiteCharts Visual Reports</li> <li>• Customer Configurable Report Filter</li> </ul>
<b>Configuration Reports</b>	<p><b>SuiteReports™ has built in Reports for:</b></p> <ul style="list-style-type: none"> <li>• Setup Details</li> <li>• Workstations</li> <li>• Workstations Details</li> <li>• Resource Collections</li> <li>• Resource Collections Details</li> <li>• Machines</li> <li>• Machines Details</li> </ul> <p><b>Note:</b> Just check the checkbox next to the reports you want, click the Print Button and your reports are ready.</p>
<b>DNC Files</b>	<p><b>SuiteReports™ has built in Reports for:</b></p> <p><b>General Reports</b></p> <ul style="list-style-type: none"> <li>• All DNC Files</li> <li>• Assignments: DNC Files to Resource Collections</li> <li>• Assignments: Resource Collections to DNC Files</li> <li>• DNC File Approval Signoff List</li> <li>• Pending DNC File Approval Signoffs</li> <li>• DNC File Approval Signoffs by User</li> <li>• Pending DNC File Approval Signoffs by User</li> <li>• DNC File Approval Signoffs by User Group</li> <li>• Pending DNC File Approval Signoffs by User Group</li> </ul> <p><b>History Reports</b></p> <ul style="list-style-type: none"> <li>• DNC File History Actions</li> <li>• DNC File History sorted alphabetically, oldest to newest</li> <li>• DNC File History sorted alphabetically, newest to oldest</li> <li>• DNC File History sorted by id, oldest to newest</li> <li>• DNC File History sorted by id, newest to oldest</li> </ul>

	<ul style="list-style-type: none"> <li>• DNC File Download History: Sorted by File, Time, and Machine</li> <li>• DNC File Download History: Sorted by File, Machine, and Time</li> <li>• DNC File Download History: Sorted by Machine, Date and File</li> <li>• DNC File Download History: Sorted by Machine, File and Date</li> <li>• DNC File Upload History: Sorted by File, Time, and Machine</li> <li>• DNC File Upload History: Sorted by File, Machine, and Time</li> <li>• DNC File Upload History: Sorted by Machine, Date and File</li> <li>• DNC File Upload History: Sorted by Machine, File and Date</li> <li>• DNC File Download 7-Day History Chart</li> <li>• DNC File Upload 7-Day History Chart</li> <li>• DNC File Download/Upload 7-Day History Chart</li> </ul> <p><b>Note:</b> Just check the checkbox next to the reports you want, click the Print Button and your reports are ready.</p>
<p><b>Controlled Documents</b></p>	<p>SuiteReports™ has built in Reports for:</p> <p><b>General Reports</b></p> <ul style="list-style-type: none"> <li>• All Controlled Documents</li> <li>• Controlled Documents Approval Signoff List</li> <li>• Pending Controlled Documents Approval Signoffs</li> <li>• Controlled Documents Approval Signoffs by User</li> <li>• Pending Controlled Documents Approval Signoffs by User</li> <li>• Controlled Documents Approval Signoffs by User Group</li> <li>• Pending Controlled Documents Approval Signoffs by User Group</li> </ul> <p><b>History Reports</b></p> <ul style="list-style-type: none"> <li>• Controlled Documents History Actions</li> <li>• Controlled Documents File History sorted alphabetically, oldest to newest</li> <li>• Controlled Documents File History sorted alphabetically, newest to oldest</li> <li>• Controlled Documents File History sorted by id, oldest to newest</li> <li>• Controlled Documents File History sorted by id, newest to oldest</li> </ul> <p><b>Note:</b> Just check the checkbox next to the reports you want, click the Print Button and your reports are ready.</p>
<p><b>Packets</b></p>	<p>SuiteReports™ has built in Reports for:</p> <p><b>General Reports</b></p> <ul style="list-style-type: none"> <li>• All Packets</li> <li>• Assignments: Packets to Resource Collections</li> <li>• Assignments: Resource Collections to Packets</li> <li>• Packets Approval Signoff List</li> <li>• Pending Packet Approval Signoffs</li> <li>• Packets Approval Signoffs by User</li> <li>• Pending Packets Approval Signoffs by User</li> <li>• Packets Approval Signoffs by User Group</li> <li>• Pending Packets Approval Signoffs by User Group</li> </ul> <p><b>History Reports</b></p> <ul style="list-style-type: none"> <li>• Packets History Actions</li> <li>• Packets History sorted alphabetically, oldest to newest</li> <li>• Packets History sorted alphabetically, newest to oldest</li> <li>• Packets History sorted by id, oldest to newest</li> <li>• Packets History sorted by id, newest to oldest</li> </ul> <p><b>Note:</b> Just check the checkbox next to the reports you want, click the Print Button and your reports are ready.</p>
<p><b>Machine Events</b></p>	<p>SuiteReports™ has built in Reports for:</p> <p><b>General Reports</b></p> <ul style="list-style-type: none"> <li>• Machine Events</li> <li>• Session Events</li> <li>• Collected Data by Machine and Data Item</li> <li>• Collected Data by Data Item and Machine</li> <li>• Machine Utilization Chart</li> <li>• Utilization 7-Day History Chart</li> </ul> <p><b>Note:</b> Just check the checkbox next to the reports you want, click the Print Button and your reports are ready.</p>
<p><b>Report Filter</b></p>	<p>SuiteFilters™ Generates Reports Based on 8 Configurable Categories:</p> <ul style="list-style-type: none"> <li>• Selected DNC File</li> <li>• Selected User</li> <li>• Selected User Group</li> <li>• Selected Resource Collection</li> <li>• Selected Machine Tool</li> <li>• Selected Time Span</li> <li>• Machine Event</li> <li>• Selected Shift</li> </ul> <p><b>Note:</b> Just select your Times, Document/File, User, etc. and click on the Show Filtered button and display your Custom Crystal Reports. You can also save the filters with your name of your choice so you will never need to create this same criteria twice. Just Pick and Click!</p>
<p>For more information call, Fax, email or visit our SuiteFactory Web site:  CAD/CAM Integration, Inc.  76 Winn Street Woburn, MA 01801  Tel: 781-933-9500 Fax: 781-933-9238  Email: <a href="mailto:sales@suitefactory.com">sales@suitefactory.com</a>  SuiteFactory Web: <a href="http://www.suitefactory.com">www.suitefactory.com</a></p>	