



The Most Informed
Manufacturing Businesses
Use SuiteFactory

Download SuiteFactory Now!

Phone: 1-781-933-9500
Fax: 1-781-933-9238

29 years Providing Working Solutions for Manufacturing!

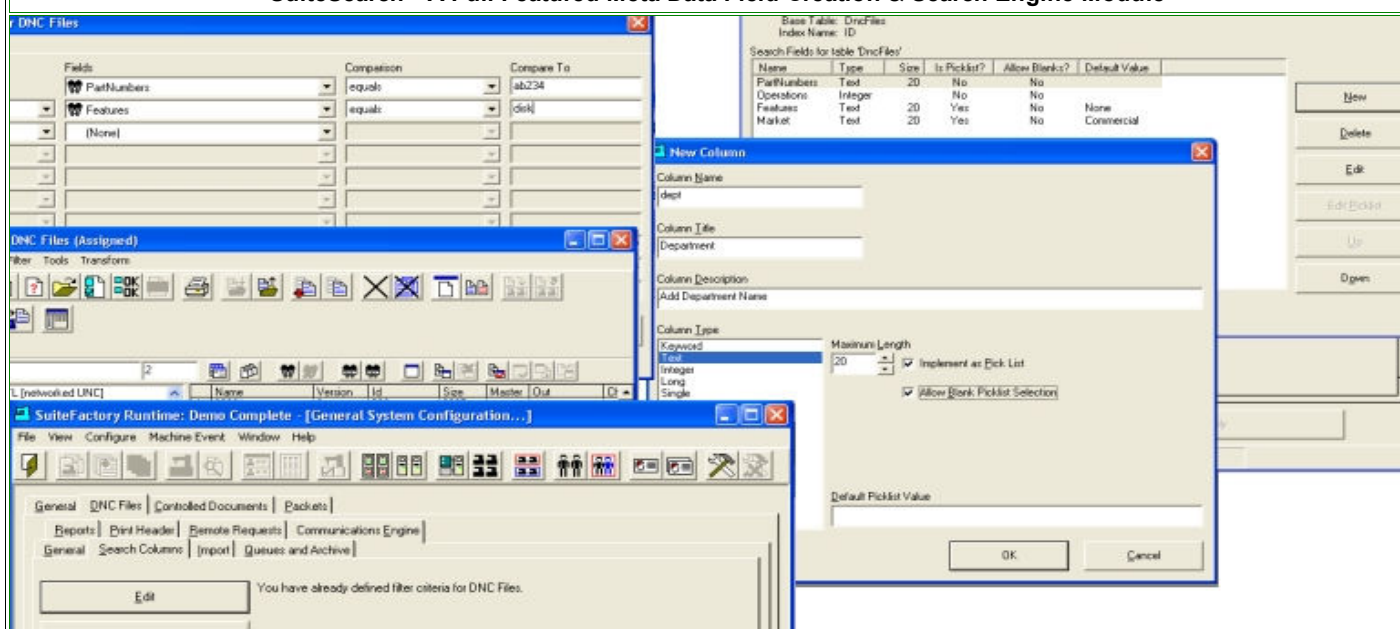
SuiteSearch™
Find any Document, File or Packet using Your Company's Meta Data
A Database-Driven, Meta Data Field Creator & Meta Data Search Engine
Part of an Integrated Family of SuiteFactory™ EventAware™ Support Modules
For Windows 7™/Windows XP™ including Terminal Server Support

SuiteSearch™ is a Composite Module consisting of a Key Field(s) Creation Module combined with a sophisticated Search Engine which is used to Query the database for Files & Documents based on the data entered in the Search Engine's Key Field(s).

These Key Fields can be individually populated for each File, Document & Packet and later used by the Search Engine to locate all the Files, Documents or Packets matching the Search Engine's Search Criteria.

The located Files/Documents/Packets can then be selected to perform any function that is allowed for this Individual User subject to their User Group Rights. I.e. Editing, Deleting, Copying, Exporting, View, etc.

SuiteSearch™ A Full Featured Meta Data Field Creation & Search Engine Module



Features:

SuiteSearch™ Basics

SuiteSearch's™ Basics Include The Ability To:

- Create any number of nine Different N/C File Meta Data Fields
- Create any number of nine Different Document Meta Data Fields
- Create any number of nine Different Packet Meta Data Fields
- Search for Files, Documents or Packets using Meta Data as Search Criteria
- Search for Files, Documents or Packets using Std Properties as Search Criteria
- Search for Files, Documents or Packets using Meta Data & Std Properties
- Narrow File, Document or Packet selections using multiple Search Criteria

Note: Any Key Fields that are created are automatically accessible in the Search Engine's Key Fields.

Create

N/C File

Meta Data Fields

SuiteSearch™ Allows a User To:

- Create any number of N/C File Meta Data Field Types:
 - Key Field
 - Text Field
 - Integer Field
 - Single Field
 - Long Field
 - Double Field
 - Date Field
 - Boolean Field
 - Note Field
- Search for N/C Files using up to 10 Different Criteria Simultaneously

Note: Any Key Fields create for N/C Files are independent of Documents & Packets for greater Flexibility.

Create

Controlled Document

Meta Data Fields

SuiteSearch™ Allows a User To:

- Create any number of Document Meta Data Field Types:
 - Key Field
 - Text Field
 - Integer Field
 - Single Field
 - Long Field
 - Double Field
 - Date Field
 - Boolean Field
 - Note Field
- Search for Documents using up to 10 Different Criteria Simultaneously

Note: Any Key Fields create for Documents are independent of N/C Files & Packets for greater Flexibility.

<p style="text-align: center;">Create Packets Meta Data Fields</p>	<p>SuiteSearch™ Allows a User To:</p> <ul style="list-style-type: none"> • Create any number of Packet Meta Data Field Types <ul style="list-style-type: none"> ○ Key Field ○ Text Field ○ Integer Field ○ Single Field ○ Long Field ○ Double Field ○ Date Field ○ Boolean Field ○ Note Field • Search for Packets using up to 10 Different Criteria Simultaneously <p>Note: Any Key Fields create for Packets are independent of N/C Files & Documents for greater Flexibility.</p>
<p style="text-align: center;">Create Pick Lists For Meta Data Fields</p>	<p>SuiteSearch™ Allows a User To:</p> <ul style="list-style-type: none"> • Create any number of Picklist Meta Data Fields for the Following Type: <ul style="list-style-type: none"> ○ Text Field ○ Integer Field ○ Single Field ○ Long Field ○ Double Field ○ Date Field • Search for Pick list Meta Data using up to 10 Different Criteria Simultaneously <p>Note: Pick Lists can be create for N/C Files, Documents & Packets and are fully Independent for greater Flexibility.</p>
<p style="text-align: center;">SuiteSearchEngine™</p>	<p>SuiteSearch's™ Search Engine:</p> <ul style="list-style-type: none"> • Search Engine <p>The Search Engine can be quickly configured to search for any Files, Documents and or Packets based on their Properties and or Meta Data defined by the customer. The Search is defined by using built in boolean conditions to narrow the search range.</p> <p>There can be up to 10 criteria used at the same time to locate the needed files and documents. The Search Engine can use the following criteria for its searches: standard file properties, key words, dates, integers, text, pick-list, etc.</p>
<p style="text-align: center;">For more information call, Fax, email or visit our SuiteFactory Web site: CAD/CAM Integration, Inc. 76 Winn Street Woburn, MA 01801 Tel: 781-933-9500 Fax: 781-933-9238 Email:sales@suitefactory.com SuiteFactory Web:www.suitefactory.com</p>	