



The Most Informed  
Manufacturing Businesses  
Use SuiteFactory

Download SuiteFactory Now!

Phone: 1-781-933-9500  
Fax: 1-781-933-9238

29 years Providing Working Solutions for Manufacturing!

### SuiteViews™

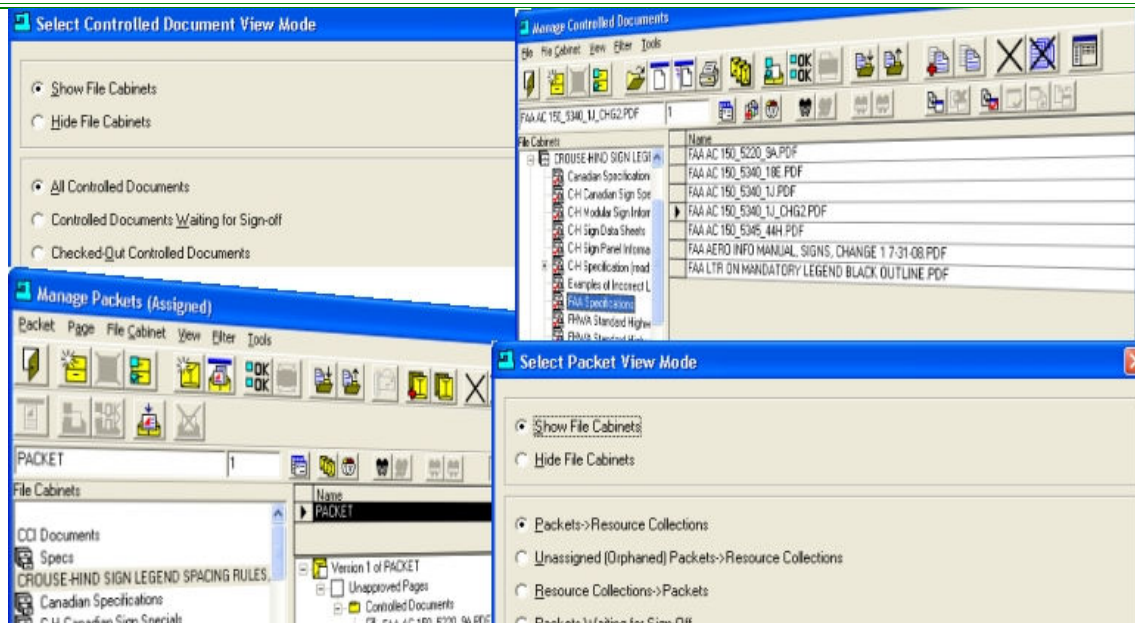
**SuiteViews™ Provides over 120 Plus Different Data Relationship Views**  
**Change the way you View your Data with only a few clicks of your Mouse**  
**A SuiteFactory™ Support Module for Viewing All of Your Data Relationships**  
**For Windows 7™/Windows XP™ including Terminal Server Support**

SuiteView™ provides many different ways for you to View your Data Relationships. When you deal with data you need to View it according to Role you are playing at that time. Suppose your present Role is an Engineer verses a Supervisor, chances are the Data Relationship Views you need will not be the same.

As an example if your Role is a "Shop Operator" you will probably need a View which lists Machine Tools first since your Primary Role's Duty is to download and upload N/C Files to and from the CNC. If your Role is one that is responsible for Approving Files, Documents and or Packets you want to View it in a Quality "Role" Context.

SuiteView™ provides an almost unlimited set of Customer Configurable Views to be able to View your Data-Relationships in the Context that best suites your present Role!

### SuiteViews™ an Integrated Support Module



#### Standard:

#### SuiteViews™ Basics

##### SuiteViews™ Basics Include:

- Show File Cabinets
- Hide File Cabinets

##### N/C Files

- File->Resource Collections and Machines
- Unassigned(Orphaned) Files->Resource Collections and Machines
- Machines->Resource Collections->Files
- Resource Collections->Machines->Files
- Files Waiting for Sign-off
- Checked-Out Files
- Assigned
- Not Assigned
- View NC Programs
- View Help Topics
- View Approved DNC Files
- View DNC Files with Pending Approval

##### Packets

- Packets->Machines and Resource Collections
- Unassigned (Orphaned) Packets->Machines and Resource Collections
- Machines->Resource Collections->Packets
- Resource Collections->Machines->Packets
- Packets Waiting for Sign-off
- Assigned
- Not Assigned
- View Approved Packets
- View Packets with Pending Approval

##### Documents

- All Controlled Documents
- Controlled Documents Waiting for Sign-off
- Checked-Out Controlled Documents
- View Approved Controlled Documents
- View Controlled Documents with Pending Approval

#### SuiteFileCabinet™ View

Use this "View" when you only want to view Documents & Packets contained within a Virtual File Cabinet, Draw, Folder or Sub-Folder.

**Note:** SuiteFileCabinet™. allows you to securely store & manage Files, Documents and Packets in it's

	"Virtual File Cabinet(s)".
<b>SuiteViews™ For N/C Files</b>	<p>SuiteViews™ provides over 120 Plus different ways for you to view how "Virtual File Cabinets", Files, Documents and NCFiles are related to various Entities within SuiteFactory™</p> <p>Following is a list of the various Relationships:</p> <ul style="list-style-type: none"> <li>• File-&gt;Resource Collections and Machines</li> <li>• Unassigned(Orphaned) Files-&gt;Resource Collections and Machines</li> <li>• Machines-&gt;Resource Collections-&gt;Files</li> <li>• Resource Collections-&gt;Machines-&gt;Files</li> <li>• Files Waiting for Sign-off</li> <li>• Checked-Out Files</li> </ul> <p><b>Note:</b> This Relationship Setting is Independent of any other View and multiplies your Relationship Views by thirty six times!</p>
<b>SuiteViews™ For Documents</b>	<p>SuiteViews™ provides 12 Plus different ways for you to view how "Virtual File Cabinets", Files and Documents are related to various Entities within SuiteFactory™</p> <p>Following is a list of the various Relationships:</p> <ul style="list-style-type: none"> <li>• All Controlled Documents</li> <li>• Controlled Documents Waiting for Sign-off</li> <li>• Checked-Out Controlled Documents</li> </ul> <p><b>Note:</b> This Relationship Setting is Independent of any other View and multiplies your Relationship Views by six times!</p>
<b>SuiteViews™ For Packets</b>	<p>SuiteViews™ provides 32 Plus different ways for you to view how "Virtual File Cabinets", Files, Documents and Packets are related to various Entities within SuiteFactory™</p> <p>Following is a list of the various Relationships:</p> <ul style="list-style-type: none"> <li>• Packets to Resource Collections</li> <li>• Unassigned (Orphaned) Packets to Resouce Collections</li> <li>• Resource Collections to Packets</li> <li>• Packets Waiting for Sign-off</li> </ul> <p><b>Note:</b> This Relationship Setting is Independent of any other View and multiplies your Relationship Views by six times!</p>
<b>Assigned And Unassigned Views</b>	<p>SuiteFactory™ provides "Views" of Assigned or Unassigned Packets to Resource Collections. Users associated to these Resource Collections can then access Packets Assigned to these Resource Collections.</p> <p>Select the SuiteViews™ icon and select the Assigned or Unassigned View!</p>
<b>Approved And Unapproved Views</b>	<p>SuiteFactory™ provides "Views" to display Approved or Unapproved Files, Documents and or Packets. Generally a Normal User can only access approved Files, Documents and or Packets.</p> <p>Select the SuiteViews™ icon and select theApproved or Unapproved View!</p>
<p>For more information call, Fax, email or visit our SuiteFactory Web site:            CAD/CAM Integration, Inc.            76 Winn Street Woburn, MA 01801            Tel: 781-933-9500 Fax: 781-933-9238            Email:<a href="mailto:sales@suitefactory.com">sales@suitefactory.com</a>            SuiteFactory Web:<a href="http://www.suitefactory.com">www.suitefactory.com</a></p>	