

# SuiteFactory™

## SuiteFactory Technotes "Creating User Groups"

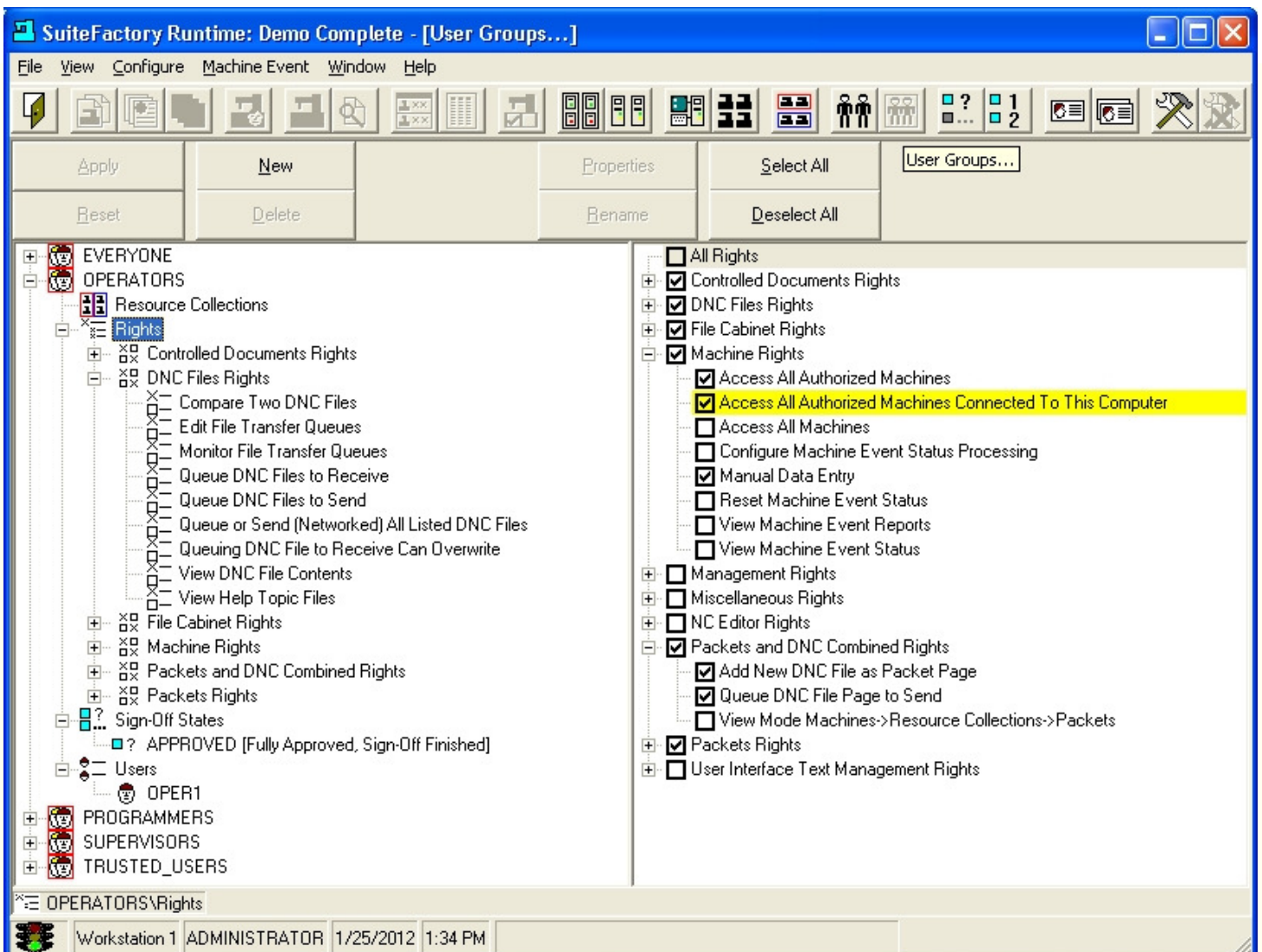
User Groups Integrate Resource Collections, Rights, Sign-Off States and Users  
Allowing Customers to Create and Manage any number of Manufacturing User Roles

User Groups are the Heart of SuiteFactory™ and every User of SuiteFactory has to belong to a User Group. When creating User Groups you have over 11 Categories with over 120 "Rights" from which to create any Manufacturing Role that is required. The Roles that you Create can be for: Administrators, Supervisors, Programmers, Engineers, Operators, etc.

By selectively setting "Rights" and Associating User Groups with specific Resource Collections, Sign-Off States and Users you can fully control your Manufacturing Environment!

User Groups: Creating and Managing all of your Manufacturing Roles

### SuiteFactory Runtime - "User Groups"

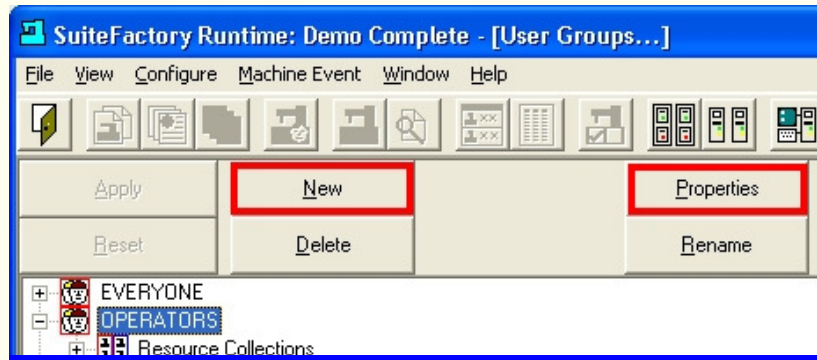


To display the above Window click the "User Groups..." Icon from SuiteFactory Runtime

Standard:

**Creating  
A  
User Group**

**Click on the New Button:**



**Enter Name of User Group:**

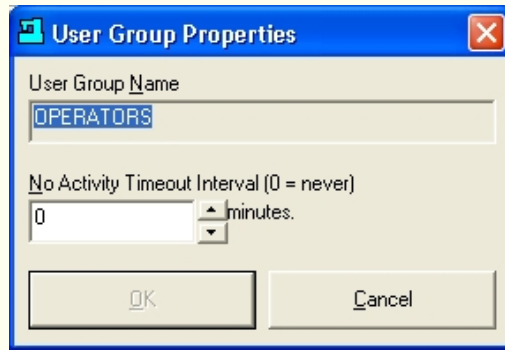


**Select the "User Group" Name to reflect the Role that this "User Group" will play in your Organization!**

**Note:** In this Example this "User Group's" Role is that of an Operator thus the Name "Operators".

**Setting  
User Group  
Time Out**

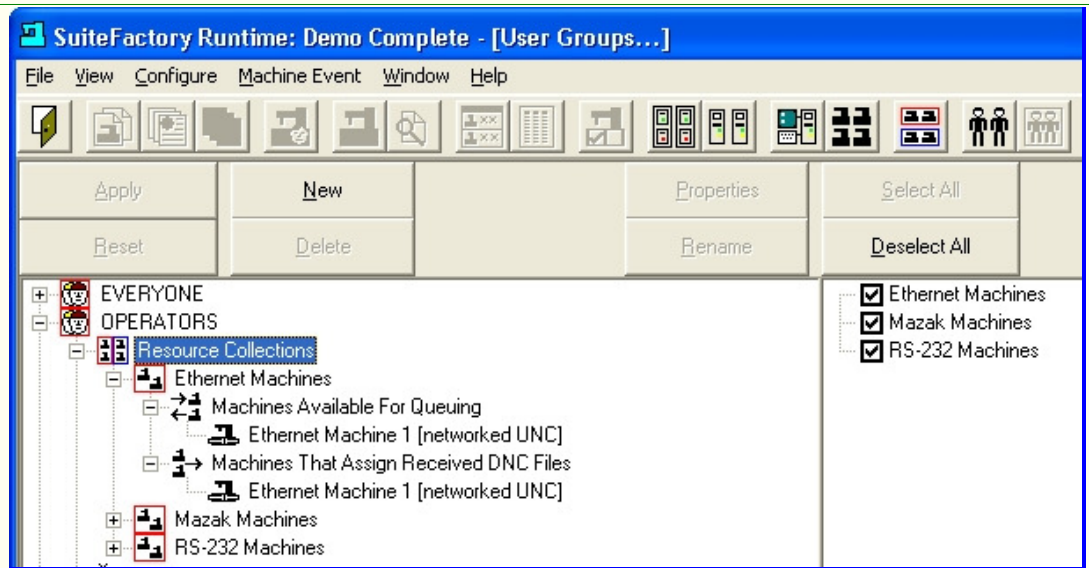
**Click on the Properties Button:**



**Note:** In this Example th "User Group's" Time Out is set to Zero which means it never times Out.

**Setting  
User Group  
Resource Collection  
Associations**

**Click on the Resource Collections Icon:**

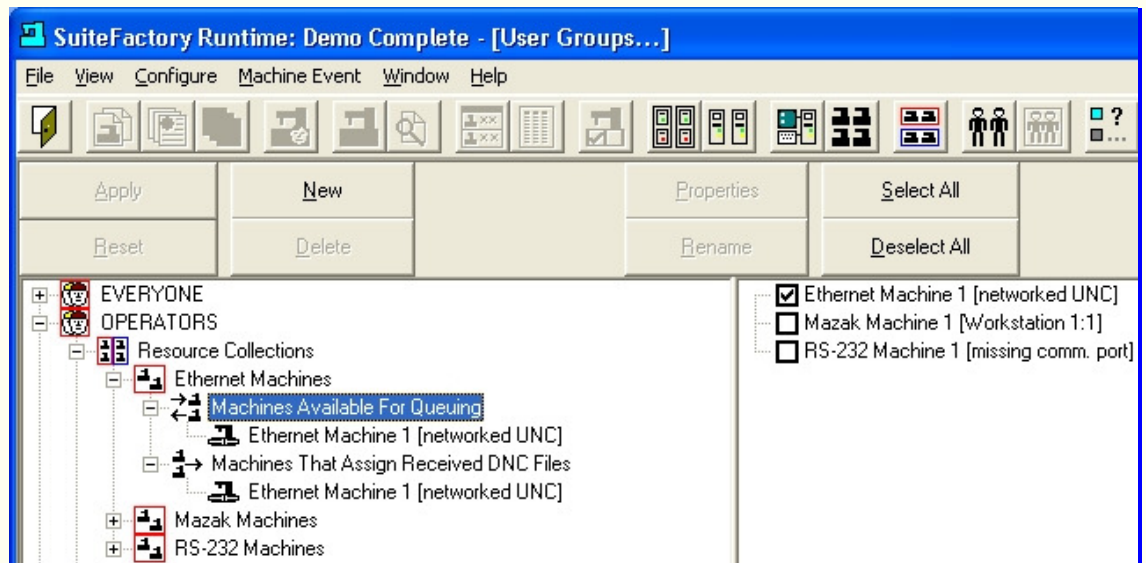


**Check the Checkboxes for the Resource Collections to be Associated with this User Group**

**Note:** A Resource Collection is a special type of Container that holds DNC Files & Packets. A Resource Collection can also have Associations with any number of Machine Tools. Users in this "User Group" can access the associated Resource Collections, it's Machine Tools, DNC Files & Packets.

See "Creating Resource Collections" for a more detailed explanation.

**Click on the Machines Available For Queuing Icon:**



**Check the Checkboxes for the Machine Tools to be Associated with this Resource Collection**

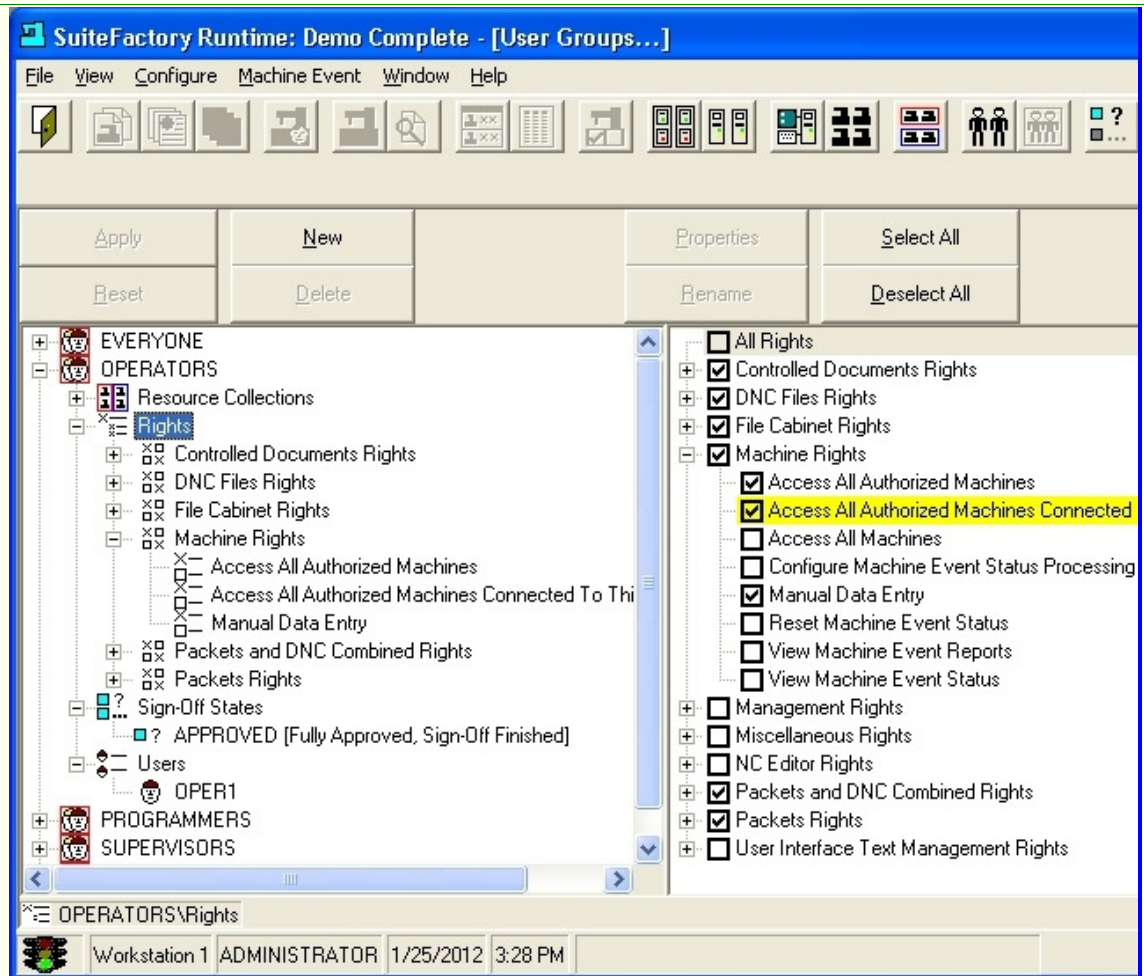
**Note:** The Selected Machine Tools are now able to access all of the DNC Files & Packets in this Resource Collection and will be available for Manual and or Remote Request up & downloads for any of DNC Files assigned to this Resource Collection.

See "Creating Resource Collections" for a more detailed explanation.

**Click on the Rights Icon:**

**Setting  
User Group  
Resource Collection  
Machines Available  
For  
Queuing  
Associations**

**Setting  
User Group  
Rights  
Associations**



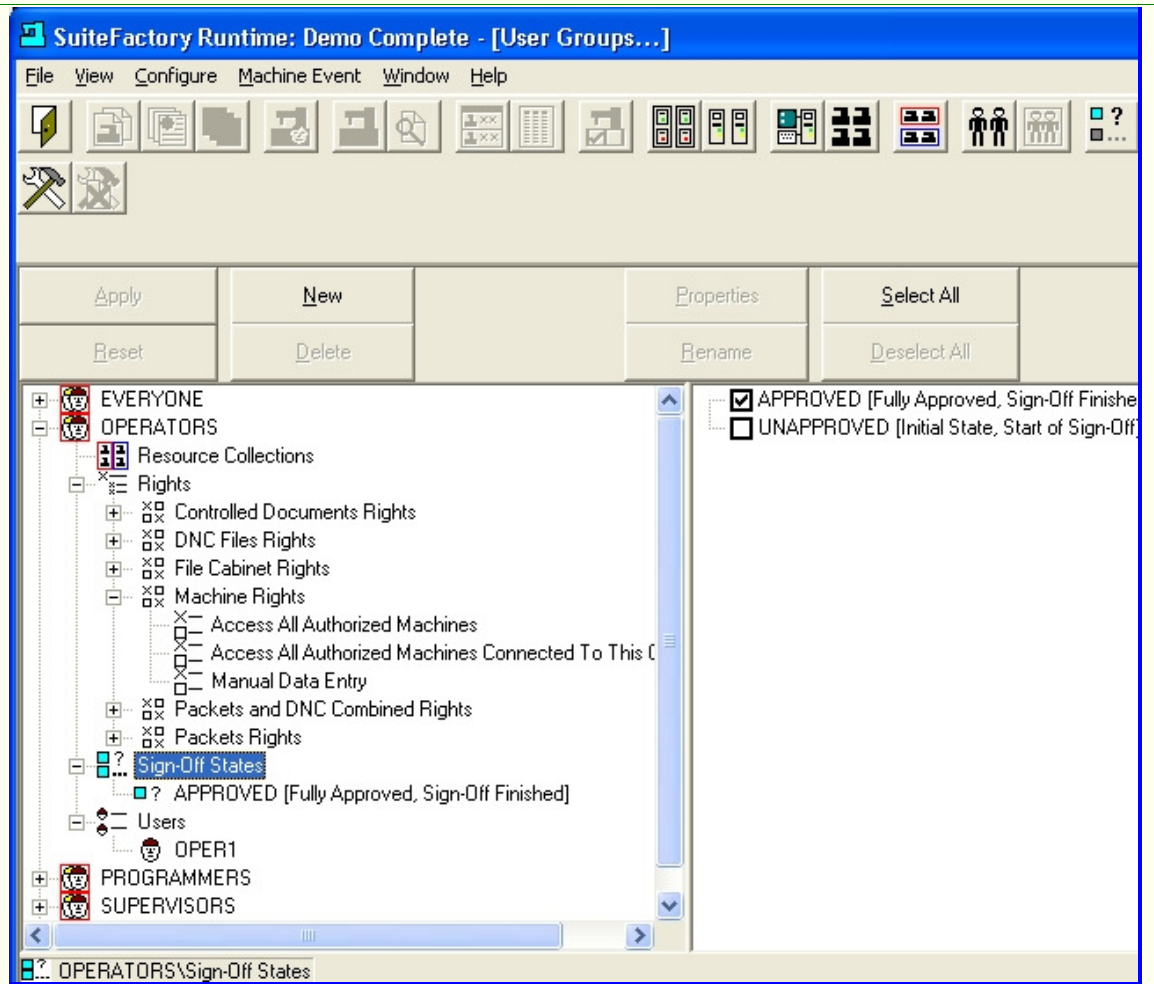
From the 11 Categories Check the Checkbox of the Category to which you want to Activate "Rights"

**Note:** Once that Category of "Rights" opens select the "Rights" that you want this "User Group" to be assigned. You can choose the various "Rights" from each of the Categories that fits the Particular Role you are creating. These can be change at anytime by an Administrator.

See "Creating Rights" for a more detailed explanation.

Click on the Sign-Off States Icon:

Setting  
User Group  
Sign-Off State  
Associations



**From the Sign-Off State's List check the Checkboxes of the Sign-Off States allowed for this "User Group"**

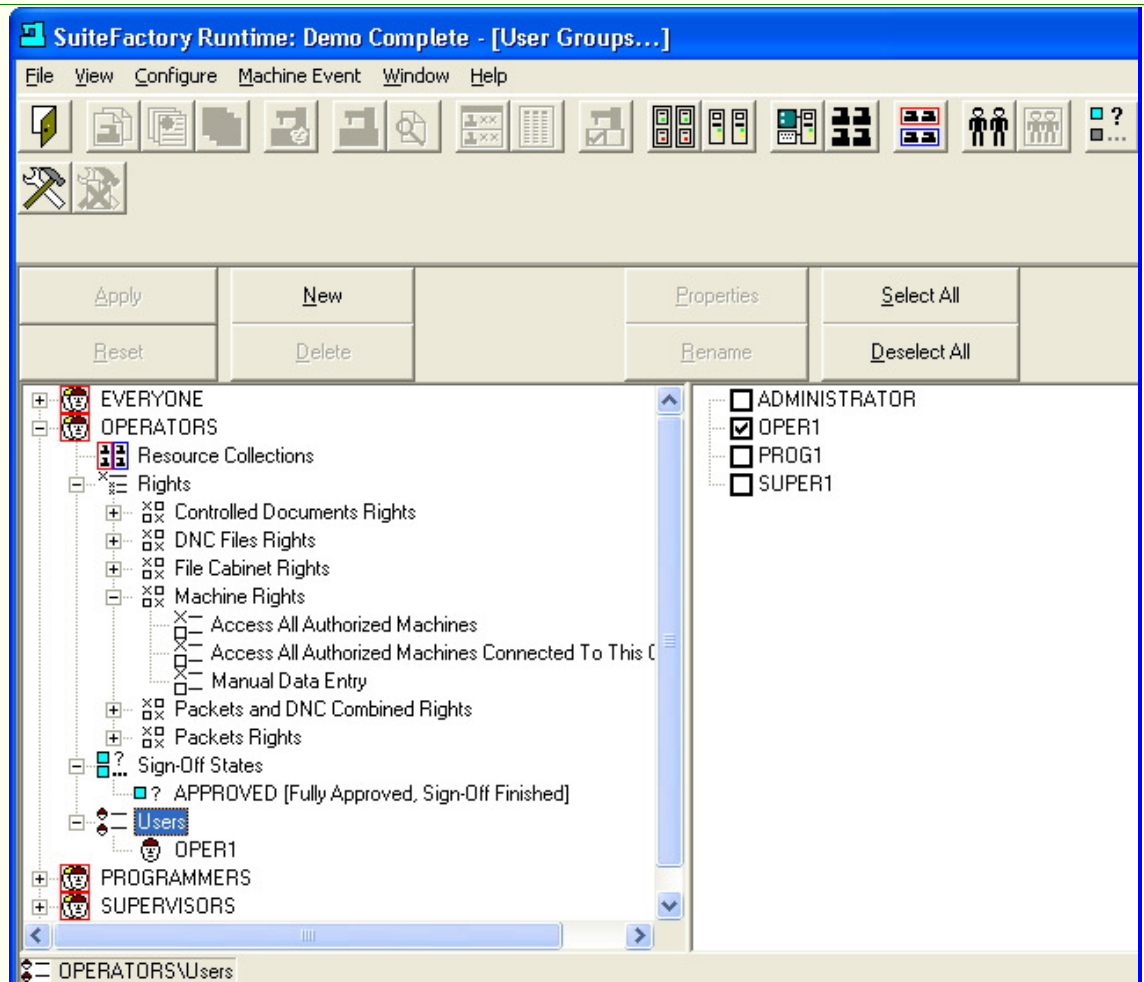
**Note:** The displayed Sign-Off List is the list of "Default" Sign-Off States. By checking these "Sign-Off States" this "User Group" is allowed to access either Approved(Always allowed) or Approved & Unapproved DNC Files/Document/Packets if the appropriate "Rights" were set in the various "Rights" Categories! Ie: DNC File Rights; Controlled Documents Rights; Packets Right.

As an example an individual operator on the Shop Floor would not be allowed to have access to "Unapproved" DNC Files while a Programmer may be allowed access to "Unapproved" DNC Files during development.

SuiteFactory allows you to create as many Sign-Off States with Sign-Off Flow Charts as you deem needed. See "Creating Sign-Off States" for a more detailed explanation.

**Click on the Users Icon:**

**Setting  
User Group  
User  
Associations**



**From the User's List check the Checkboxes of the Users included in this "User Group"**

**Note:** The selected Users that belong to this "User Group" now have access to this "User Group's" Resources with the "Rights" as set for this "User Group". Ie. The Role you created.

SuiteFactory allows you to create as many Users as you deem needed. See "Creating Users" for a more detailed explanation.

**For more information call, Fax, email or visit our SuiteFactory Web site:**

**CAD/CAM Integration, Inc.**

**76 Winn Street Woburn, MA 01801**

**Tel: 781-933-9500 Fax: 781-933-9238**

**Email: [sales@suitefactory.com](mailto:sales@suitefactory.com)**

**SuiteFactory Web: [www.suitefactory.com](http://www.suitefactory.com)**